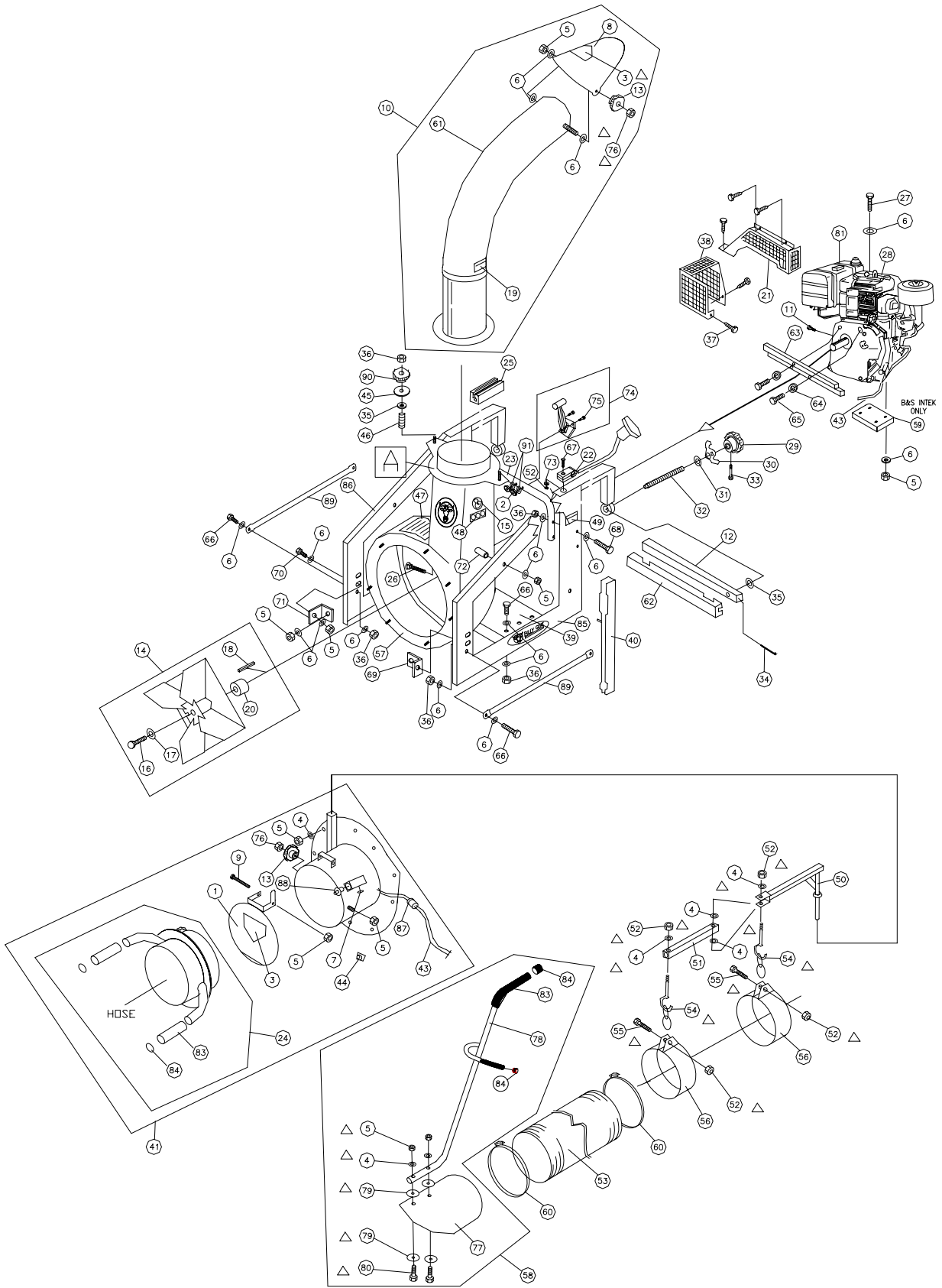




PARTS DRAWING HTR/TR





PARTS LIST

ITEM	DESCRIPTION	HTR1803V PART NO.	QTY	TR1304H PART NO.	QTY	TR1104 PART NO.	QTY
1	FLAPPER 10" INTAKE W/LABEL	811183	1	- - -	- -	- - -	- -
	FLAPPER 8" INTAKE W/ LABEL	- - -	- -	811174	1	811174	1
2	NUT LOCK 10-24	-	-	8164005	2	8164005	2
3	LABEL DANGER KEEP HANDS AND FEET AWAY	400424	2	400424	2	400424	2
4	WASHER 5/16 SAE (11/32 ID x 11/16 OD x 1/16)	*8172008	12	*8172008	10	*8172008	10
5	NUT LOCK 5/16-18	*8160002	18	*8160002	18	*8160002	18
6	WASHER 5/16 FLAT CUT (3/8 I.D. x 7/8 O.D. x 1/16)	*8171003	44	*8171003	44	*8171003	44
7	PLUG 3/4"	811123	1	811123	1	811123	1
8	DEFLECTOR EXHAUST 7"	811111	1	811111	1	811111	1
9	CARRIAGE BOLT 5/16-18 x 3 1/2	*8024050	1	*8024050	1	*8024050	1
10	ELBOW ASSY TR/HTR	811191	1	811191	1	811191	1
11	SCREWCAP 5/16-18X.75					8041026	1
12	TUBE CLAMP	810953	1	810953	1	810953	1
13	KNOB	400339	2	400339	2	400339	2
14	IMPELLER ASSY (INCLUDES 16(1),17(1),18(1), 20(1))	810930	1	810974	1	810629	1
15	LABEL READ OWNER'S MANUAL	890301	1	890301	1	890301	1
16	SCREW CAP 3/8-24 x 2" GR 8 [50 Ft. Lbs. (68 N.m)]	810962	1	- - -	- -	- - -	- -
	SCREW CAP 3/8 - 24 X 2 1/4 GR 8 [50 Ft. Lbs. (68 N.m)]	- - -	- -	810932	1	- - -	- -
	SCREW CAP 7/16 - 20 X 2 GR 5 [60 Ft. Lbs. (81.4 N.m)]	- - -	- -	- - -	- -	500188	1
17	WASHER LOCK 3/8 TWISTED TOOTH	400502	1	400502	1	- - -	- -
	WASHER LOCK 7/16 TWISTED TOOTH	- - -	- -	- - -	- -	850132	1
18	KEY SQ. 1/4 x 2 3/4	*9201125	1	*9201125	1	- - -	- -
	KEY SQ. 1/4 X 2 1/4	- - -	- -	- - -	- -	*9201123	1
19	LABEL DANGER FLYING MATERIAL	810736	2	810736	2	810736	2
20	SPACER IMPELLER	830112	1	830112	1	830112	1
21	GUARD MANIFOLD	811059	1	- - -	- -	- - -	- -
22	GUIDE STARTER ROPE (HALF)	830533	2	830533	2	830533	2
23	TUBE REAR FRAME	811218	1	811218	1	811218	1
24	COUPLER HOSE W/GRIP	811179	1	811170	1	811170	1
25	PAD FRAME SHORT	811120	2	811120	2	811120	2
26	CARRIAGE BOLT 5/16-18 x 2 1/4	*8024045	1	- - -	- -	- - -	- -
	CARRIAGE BOLT 5/16-18 x 4 1/2	- - -	- -	*8024054	1	*8024054	1
27	SCREW CAP 5/16-18 x 1 1/2	*8041030	4	*8041030	4	- - -	- -
	SCREW CAP 5/16-18 x 2 1/2	- - -	- -	- - -	- -	*8041034	4
28	ENGINE 18 H.P. VN W/CONTROL PANEL	811224	1	- - -	- -	- - -	- -
	ENGINE HONDA 13HP	- - -	- -	430366	1	- - -	- -
	ENGINE BRIGGS 11 HP INTEK I/C	- - -	- -	- - -	- -	811205	1
29	KNOB	850154	2	850154	2	850154	2
30	NUT LOCK W.A.	800227	2	800227	2	800227	2
31	WASHER 3/4, PLASTIC	800109	2	800109	2	800109	2
32	STUD 3/4 -10 x 5 1/2	810954	2	810954	2	810954	2
33	SCREW MACHINE #10-24 x 2	*8059143	2	*8059143	2	*8059143	2
34	PIN COTTER 1/8 x 1"	*8197031	2	*8197031	2	*8197031	2
35	WASHER 3/8 SAE	*8172009	4	*8172009	4	*8172009	4
36	NUT LOCK 3/8-16	*8160003	18	*8160003	18	*8160003	18
37	SCREW SHEET METAL 1/4 AB x 3/4	*8122082	3	- - -	- -	- - -	- -
38	GUARD MUFFLER	811058	1	- - -	- -	- - -	- -
39	BASE ENGINE	810907	1	810907	1	810907	1
40	PAD FRAME LONG	811122	2	811122	2	811122	2
41	PLATE FRONT 10" HTR W/INTERLOCK (INCL. 1,2,3,5(2),7,13,43,44,49,59,83,84,87,88)	811182	1	- - -	- -	- - -	- -
	PLATE FRONT 8" TR W/INTERLOCK (INCL. 1,2,3,5(2),7,13,43,44,49,59,83,84,87,88)	- - -	- -	811173	1	811173	1
42							
43	CABLE ASSY SWITCH SV	890442	1	890442	1	890442	1
44	CLIP-CABLE LIFT	850200	3	850200	3	850200	3
45	WASHER-1.5 OD X 0.531 ID	610308-P	2	610308-P	2	610308-P	2
46	SPRING	400332	2	400332	2	400332	2
47	LABEL CAUTION	830138	1	830138	1	830138	1
48	LABEL EAR,EYE,BREATHING	890254	1	890254	1	890254	1
49	LABEL WARNING ENGINE OVERHEAT	811215	2	811215	2	811215	2
50	BOOM-PIVOT W.A.	810870	1	810870	1	810870	1
51	TUBE-SQUARE BOOM ARM	810875	1	810875	1	810875	1
52	NUT LOCK 1/4-20	*8160001	5	*8160001	5	*8160001	5
53	HOSE 10" x 10' HTR	791033	1	- - -	- -	- - -	- -
	HOSE 8" x 10' TR	- - -	- -	811244	1	811244	1
54	CHAIN-LOOP ASSY	810878	2	810878	2	810878	2
55	SCREW CAP 1/4-20 x 1 3/4	*8041009	2	*8041009	2	*8041009	2
56	BAND HOSE BOOM 10" HTR	810868	2	- - -	- -	- - -	- -
	BAND HOSE BOOM 8" TR	- - -	- -	810880	2	810880	2
57	HOUSING ASSY W/LABELS (INCLUDES 5(2), 13(2), 45(2), 46(2), 47, 48)	810912	1	810976	1	810976	1
58	NOZZLE ASSY 10" HTR (INCL. 4(2), 5(3), 6, 23, 77, 79(4), 80(2), 82, 83, 84)	811010	1	- - -	- -	- - -	- -
	NOZZLE ASSY 8" TR (INCL. 4(2), 5(3), 6, 23, 77, 79(4), 80(2), 82, 83, 84)	- - -	- -	811009	1	811009	1
59	SPACER ENGINE INTEK	- - -	- -	- - -	- -	430355	1
60	CLAMP HOSE 10" HTR	810706	2	- - -	- -	- - -	- -
	CLAMP HOSE 8" TR	- - -	- -	810566	2	810566	2
61	ELBOW EXHAUST WA	811192	1	811192	1	811192	1
62	PAD FRAME CLAMP TUBE	811121	1	811121	1	811121	1
63	SUPPORT PLATE ENGINE / SPACER ENG.	810927	1	810965	1	810965	1



HTR/TR Owner's Manual

PARTS LIST

ITEM	DESCRIPTION	HTR1803V PART NO.	QTY	TR1304H PART NO.	QTY	TR1104 PART NO.	QTY
64	WASHER LOCK 3/8	*8177012	2	*8177012	2	- - -	-
	WASHER LOCK 5/16 EXT. TOOTH	- - -	-	- - -	-	*8181008	2
65	SCREW CAP 3/8 - 16 X 1	*8041050	2	- - -	--	- - -	--
	SCREW CAP 3/8 - 16 X 1 1/2 ZP	- - -	--	8041052	2	8041052	2
66	SCREW CAP 3/8 - 16 x 1"	*8041050	12	*8041050	12	*8041050	12
67	SCREW CAP 1/4-20 X 1 1/2	*8041008	1	*8041008	1	*8041008	1
68	SCREW CAP 3/8 - 16 X 1 3/4 ZP	*8041053	4	*8041053	4	*8041053	4
69	ANGLE BRKT R.H.	810917	1	811096	1	811096	1
70	SCREW CAP 5/16-18 x 1"	*8041028	2	*8041028	2	*8041028	2
71	ANGLE BRKT L.H.	810916	1	810969	1	810969	1
72	SPACER	811097	1	811098	1	811098	1
73	WASHER FLAT CUT 1/4	*8171002	1	*8171002	1	*8171002	1
74	CONTROL THROTTLE ASSY	810904-1	1	811222	1	811222	1
75	SCREW MACHINE 10-24 x 1-1/2"	- - -	--	8059141	2	8059141	2
76	NUT LOCK 5/16-18 THIN HT.	8161041	2	8161041	2	8161041	2
77	NOZZLE FORMED STEEL 10"	811005	1	- - -	--	- - -	--
	NOZZLE FORMED STEEL 8"	-	-	811007	1	811007	1
78	HANDLE NOZZLE W/ GRIP	791116	1	791116	1	791116	1
79	WASHER FENDER 5/16	*8172020	4	*8172020	4	*8172020	4
80	SCREW CAP 5/16 - 18 X 1 3/4	*8041031	2	*8041031	2	*8041031	2
81	LABEL DO NOT FILL WHEN ENGINE IS HOT	400268	1	400268	1	400268	1
82							
83	GRIP HANDLE	500267	4	500267	4	500267	4
84	PLUG CAP	890132	4	890132	4	890132	4
85	FRAME SIDE RIGHT WA TR/HTR	811100	1	811100	1	811100	1
86	FRAME SIDE LEFT WA TR/HTR	811101	1	811101	1	811101	1
87	STRAIN RELIEF	500282	1	500282	1	500282	1
88	PLUNGER SWITCH	890440	1	890440	1	890440	1
89	TUBE HANDLE LIFT	811139	2	811139	2	811139	2
90	KNOB 3/8" SOLID HUB	811230	2	811230	2	811230	2