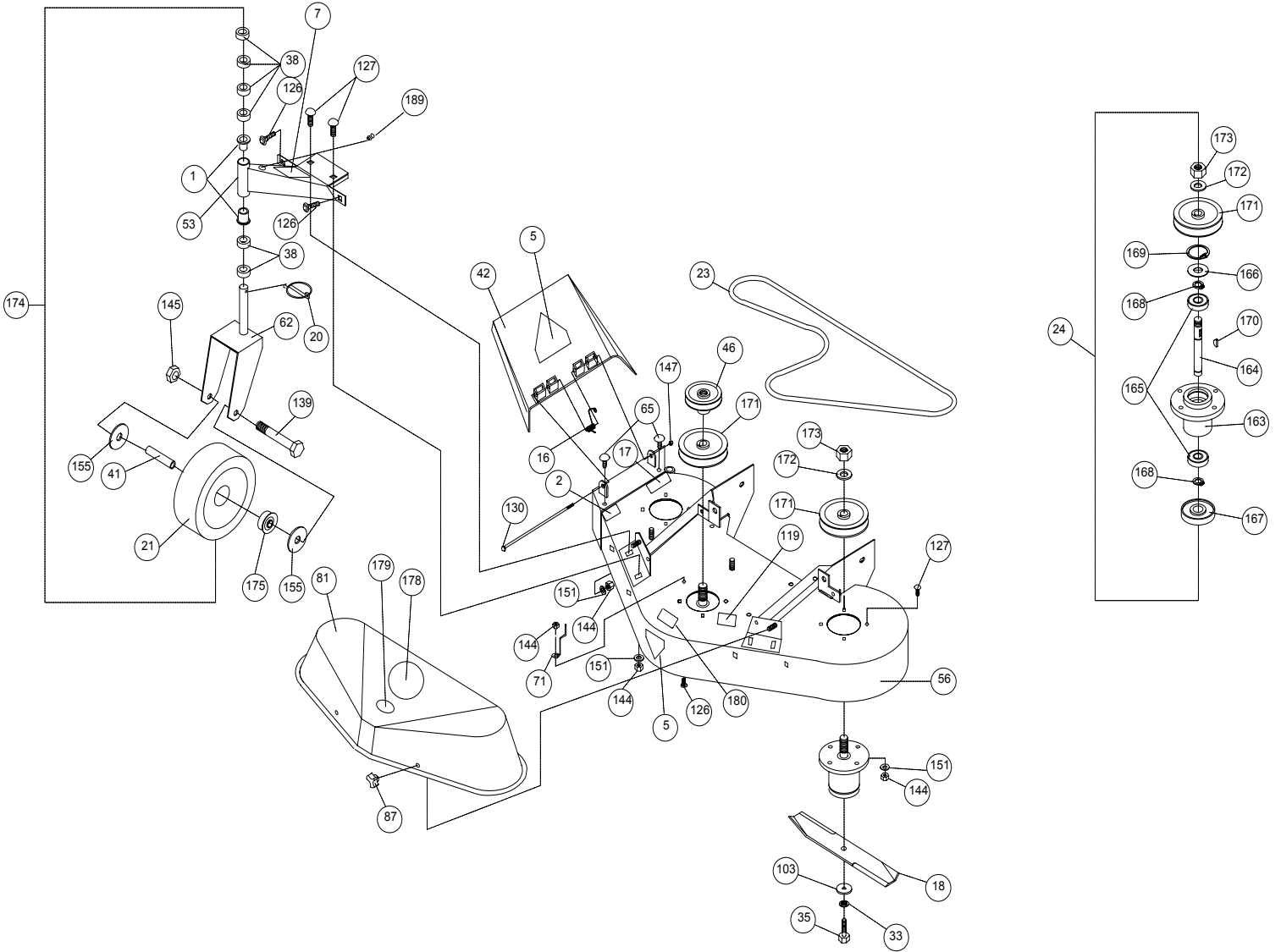


PARTS DRAWING FM

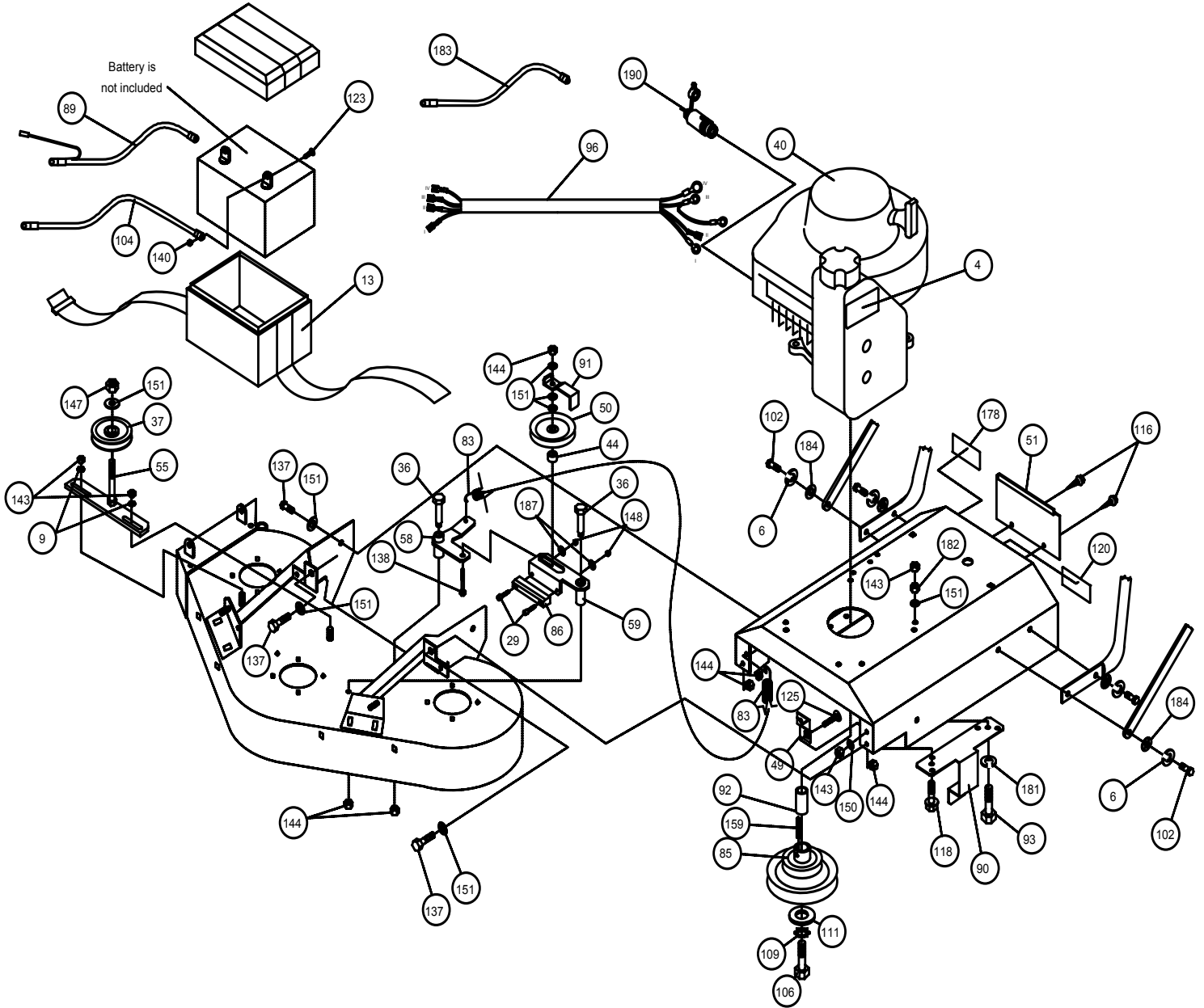




PARTS LIST

ITEM NO.	DESCRIPTION	FM3301E Part NO.	QTY	FM3301 Part NO.	QTY
1	BUSHING BRONZE	520184	4	520184	4
2	LABEL DANGER FLY	810736	1	810736	1
5	LABEL WARNING	400424	2	400424	2
7	LABEL HGT. GUIDELINE	520043	1	520043	1
16	SPRING EXHAUST CHUTE	510205	1	510205	1
17	LABEL WARNING MOWER	510206	1	510206	1
18	BLADE 11.88"	520001	3	520001	3
20	LYNCH PIN 3/16" X 1 9/16	520004	2	520004	2
21	WHEEL AND TIRE 8" ASSY.	520005	2	520005	2
23	BELT SPINDLE DRIVE	520007	1	520007	1
24	SPINDLE ASSY FM	520008	3	520008	3
33	WASHER 1/2 INNER TOOTH	520025	3	520025	3
35	SCREW CAP 1/2-20X1.25	520028	3	520028	3
38	BUSHING CASTER SPACERS	520034	12	520034	12
41	SPACER FRONT CASTER	520041	2	520041	2
42	EXHAUST CHUTE DEFLECT.	520042	1	520042	1
46	PULLEY DECK FRONT DRIVE	520047	1	520047	1
53	CASTER ARM FM WA	520067-S	2	520067-S	2
56	DECK WA W/ LABELS	520071-S	1	520071-S	1
62	BRACKET CASTER FM WA	520077	2	520077	2
65	PLUG 3/8" BUTTON HEAD	520081	2	520081	2
71	WIRE BELT FINGER	520088	1	520088	1
81	GUARD BELT W/ LABELS FM	520100-S	1	520100-S	1
87	KNOB 3 PRONG 1/4"	520109	4	520109	4
103	WASHER 1/2" X 2	610308-P	3	610308-P	3
119	LABEL DANGER	900327	1	900327	1
126	BOLT CARRIAGE 3/8-16X1" ZP	8024058	5	8024058	5
127	BOLT CARRIAGE 3/8-X 1 1/4	8024059	16	8024059	16
130	SCREW CAP 1/4 - 20 X 7"	8041023	1	8041023	1
139	SCREW CAP 1/2-13 X 4 1/2	8041107	2	8041107	2
144	NUT 3/8-16 LOCK NYLON	8160003	21	8160003	21
145	NUT 1/2-13 LOCK NYLON	8160005	2	8160005	2
147	NUT 1/4-20 LOCK NYLON	8160001	1	8160001	1
151	WASHER 5/16" FC	8171003	20	8171003	20
155	WASHER 3/4 FC	8172015	4	8172015	4
163	HOUSING SPINDLE	520008-01	3	520008-01	3
164	SHAFT SPINDLE 1215 C. D. S.	520008-02	3	520008-02	3
165	BEARING BALL 6305-25	520008-03	6	520008-03	6
166	WASHER	520008-04	3	520008-04	3
167	SHIELD	520008-05	3	520008-05	3
168	RETAINING RING	520008-06	6	520008-06	6
169	RETAINING RING	520008-07	3	520008-07	3
170	WOODRUFF KEY # 605	520008-08	3	520008-08	3
171	PULLEY 4.75" DIA. 3/4" BORE	520008-09	3	520008-09	3
172	MACHINERY BUSHING 3/4"	520008-10	3	520008-10	3
173	NUT 3/4-16 NYLON HEX	520008-11	3	520008-11	3
174	FRONT CASTER ASSY.	520140	1	520140	1
175	BEARING CASTER WHEEL	520124	4	520124	4
178	LABEL BGI BIG CIRCLE	430303	1	430303	1
179	LABEL 33" CUT FM	520115	1	520115	1
180	LABEL MADE IN USA	520116	1	520116	1
189	FITTING GREASE	610363	2	610363	2

PARTS DRAWING FM

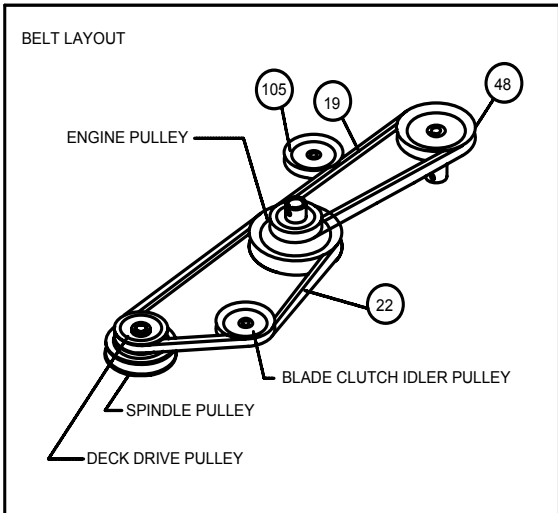
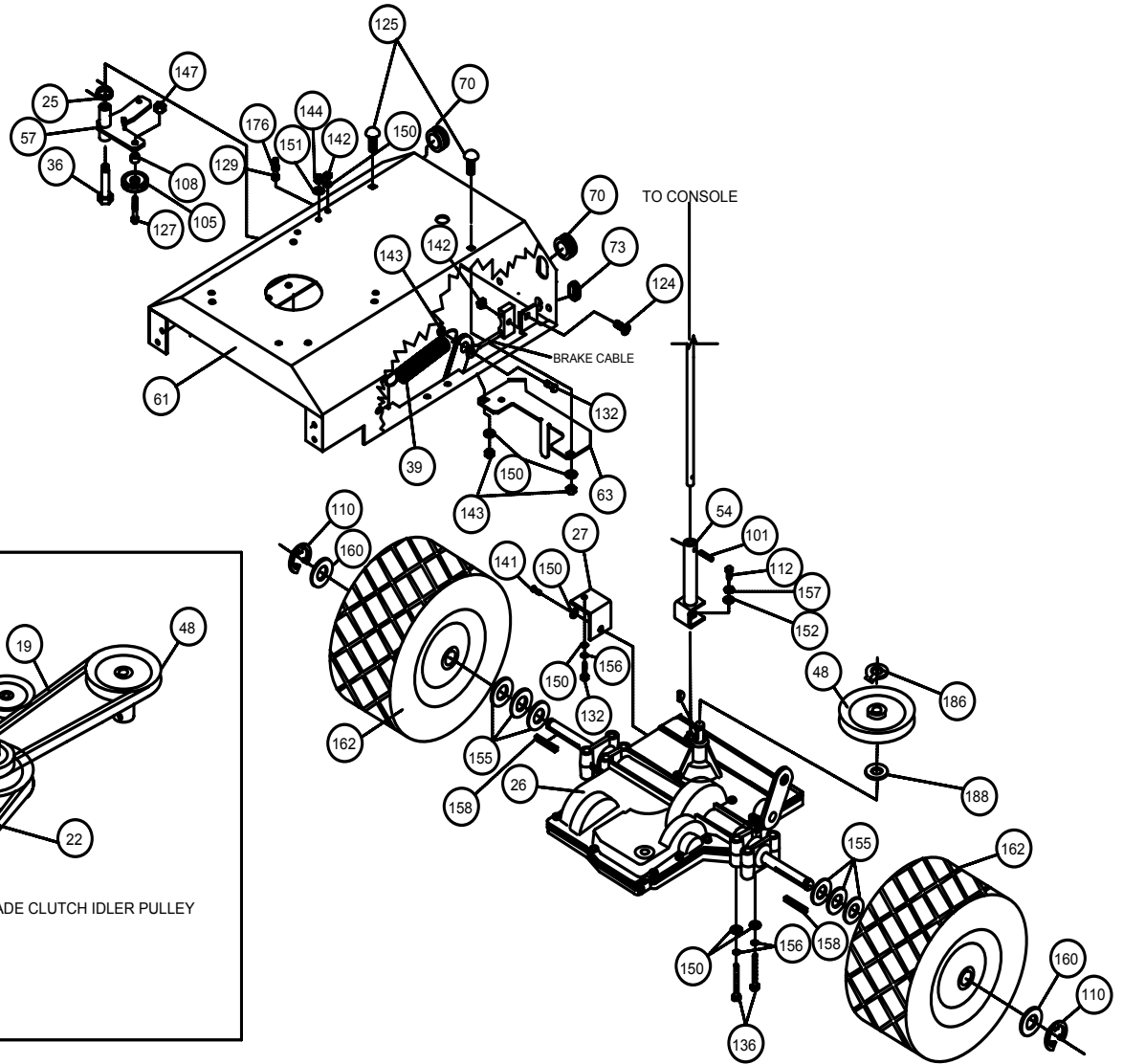




PARTS LIST

ITEM NO.	DESCRIPTION	FM3301E Part NO.	QTY	FM3301 Part NO.	QTY
4	LABEL DO NOT FILL HOT	400268	1	400268	1
6	WASHER SPLIT LOCK 3/8"	8177012	4	8177012	4
9	WASHER 5/16" TWISTED LK.	430298	2	430298	2
13	BOX BATTERY ASSY	500300	1		
29	SCREW SOCKET #10 X 1"	520018	2	520018	2
36	BOLT SHOULDER 1/2" X 2"	520031	2	520031	2
37	IDLER PLASTIC 4" X 0.375	520032	1	520032	1
40	ENGINE 13 HP B&S	520039	1	520039	1
44	SPACER NYLON BRAKE	520045	1	520045	1
49	BRKT CLUTCH CABLE FM	520052	1	520052	1
50	PULLEY IDLER BLADE DRIVE	520061	1	520061	1
51	PLATE ACCESS DOOR FM	520062	1	520062	1
55	BRKT IDLER DECK BLADE WA	520070	1	520070	1
58	PLATE BLADE CLUTCH IDL.	520073	1	520073	1
59	PLATE BLADE CLUTCH BK	520074	1	520074	1
83	SPRING TENSION WIRE	520103	1	520103	1
85	PULLEY DOUBLE 6 / 3.5 FM	520105	1	520105	1
86	BRAKE PUCK FM	520106	1	520106	1
89	CABLE BATTERY POS 10"	520111	1		
90	BRACKET BELT FINGER	520112	2	520112	2
91	BRACKET BELT FINGER BK.	520113	1	520113	1
92	SPACER HUB 1" BORE 1.5"	520114	1	520114	1
93	SCREWCAP 5/16" -18 x 2"	8041032	1		
96	WIRE HARNESS	520118	1		
102	SCREWCAP 3/8" - 1.25"	8041051	4	8041051	4
104	CABLE BATTERY BLACK 10"	790133	1		
106	SCREWCAP 7/16 X 2 1/4 GR 8	830114	1	830114	1
109	WASHER LOCK 7/16 TWIST	850132	1	850132	1
111	WASHER ENGINE PULLEY	850443	1	850443	1
116	SCREW 1/4" - 20 X 5/8"	890359	2	890359	2
118	SCREWCAP 3/8" 1 1/2" TAP	890408	3	890408	4
120	LABEL GUARDS	900327	1	900327	1
123	BOLT CARRIAGE 1/4" X 3/4"	8024039	2	8024039	2
125	BOLT CARRIAGE 5/16" X 1"	8024040	1	8024040	1
137	SCREW CAP 3/8"-16 X 1 HEX	8041050	4	8041050	4
138	SCREW CAP 3/8"-16 X 2 HEX	8041054	1	8041054	1
140	NUT LOCK 1/4"-20 NYLON	8160001	2	8160001	2
143	NUT LOCK 5/16"-18 NYLON	8160002	3	8160002	3
144	NUT LOCK 3/8"-16 NYLON	8160003	6	8160003	5
147	NUTLOCK 3/8"-16 LW TH ZP	8161042	1	8161042	1
148	NUT LOCK #10	8155007	2	8155007	2
150	WASHER 1/4" FC	8171002	1	8171002	1
151	WASHER 5/16" FC	8171003	8	8171003	8
159	KEY 1/4" SQ. X 2.25" LONG	9201123	1	9201123	1
178	LABEL DESIGN PATENT FM	520191	1	520191	1
181	WASHER SPLIT LOCK 5/16"	8177011	1		
182	NUT JAM 5/16"	8142002	1		
183	POSITIVE CABLE 10"	520123	1		
184	WASHER 3/8" FLATCUT	8171004	4	8171004	4
187	WASHER #10 FLATCUT	8171001	2	8171001	2
190	VALVE OIL DRAIN	520182	1	520182	1

PARTS DRAWING FM

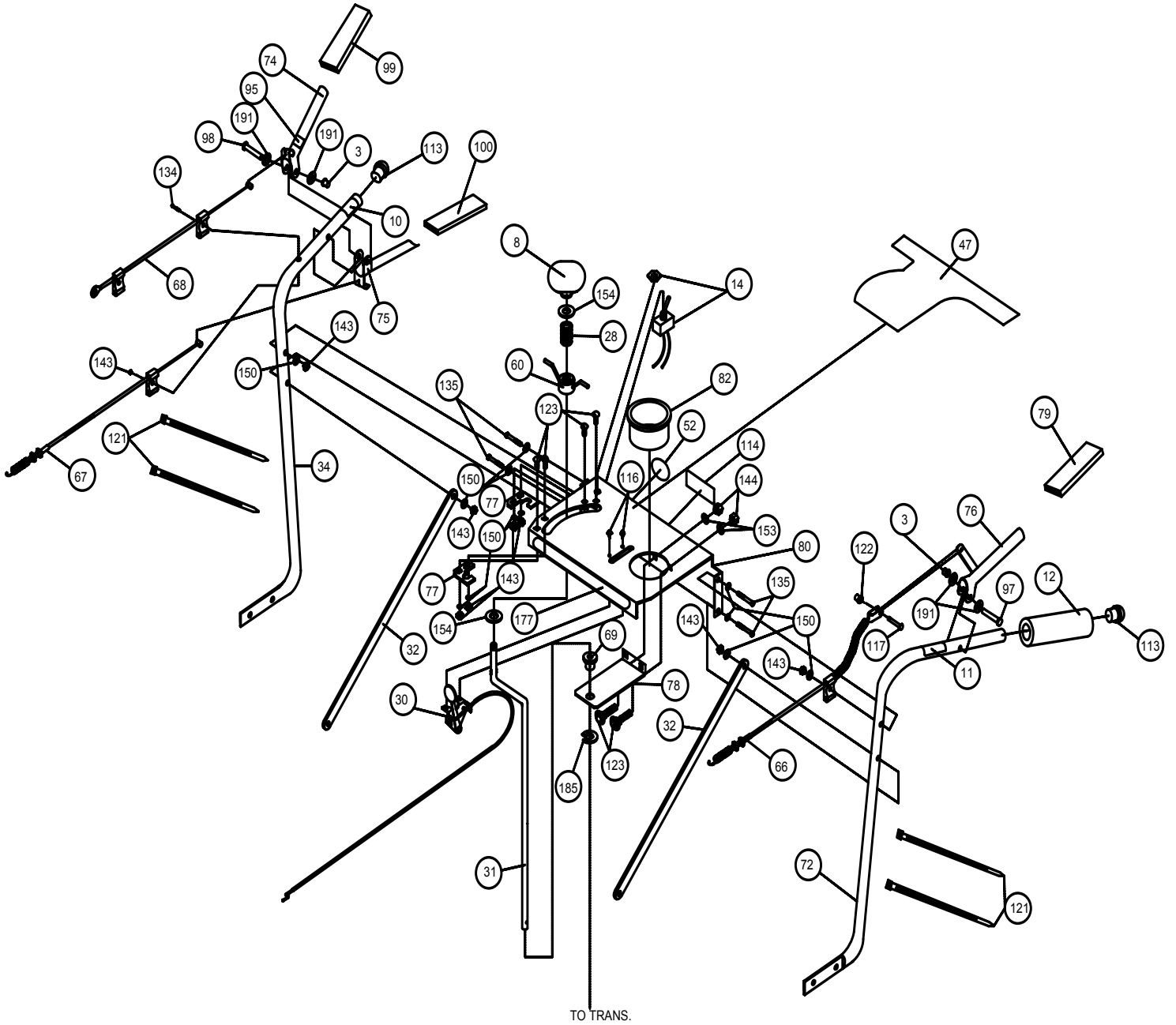




PARTS LIST

ITEM NO.	DESCRIPTION	FM3301E Part NO.	QTY	FM3301 Part NO.	QTY
19	BELT TRANS DRIVE FM	520003	1	520003	1
22	BELT BLADE DRIVE FM	520006	1	520006	1
25	SPRING TORSION WIRE	520009	1	520009	1
26	TRANSAXLE 5SPD FM	520010	1	520010	1
27	BRACKET T-AXLE SUPPORT	520016	1	520016	1
36	BOLT SHOULDER 1/2" X 2"	520031	1	520031	1
39	SPRING BRAKE	520037	1	520037	1
48	PULLEY 5" OD "A" SEC. FM	520181	1	520181	1
54	SHIFT LINKGAGE WA FM	520068	1	520068	1
57	BRKT IDLER GRND DRIVE	520072	1	520072	1
61	BASE ENGINE W/INSERTS	520177	1	520177	1
63	BRACKET BELT GUIDE DRV	520078	1	520078	1
70	GROMMET RUBBER 1"	520087	2	520087	2
73	GROMMET RUBBER 1.25"	520092	1	520092	1
101	ROLL PIN 1/4" X 1.0 IN LONG	520156	1	520156	1
105	PULLEY IDLER TENSION	800260	1	800260	1
108	TUBE PIVOT IDLER VQ	830526	1	830526	1
110	RING SNAP 0.75	850230	2	850230	2
112	SCREW CAP 1/4-28X1/2" GR 5	850408	1	850408	1
124	BOLT CARR. 1/4-20X1.25"	8024023	1	8024023	1
125	BOLT CARR. 5/16-18X1"	8024058	2	8024058	2
127	SCREWCAP 3/8-16 X 1 3/4	8041053	1	8041053	1
129	SCREWCAP 1/4"-20 X 2.75"	8041013	1	8041013	1
132	SCREWCAP 5/16-18 X 1.25"	8041029	1	8041029	1
136	SCREW CAP 5/16 - 18 x 2.75	8041035	4	8041035	4
141	SCREW SELF TAP 5/16	8123128	1	8123128	1
142	NUT LOCK 1/4-20 NYLON	8160001	2	8160001	2
143	NUT LOCK 5/16-18 NYLON	8160002	3	8160002	3
144	NUT LOCK 3/8-16 NYLON	8160003	1	8160003	1
147	NUTLOCK 3/8"-16 LW TH ZP	8161042	1	8161042	1
150	WASHER 1/4" FC	8171002	5	8171002	5
151	WASHER 5/16" FC	8171003	1	8171003	1
152	WASHER 1/4 SAE	8172007	1	8172007	1
155	WASHER 3/4 FC	8172015	6	8172015	6
156	WASHER LOCK 5/16 SPLIT	8177011	5	8177011	5
157	WASHER LOCK 1/4" EXT.	8181007	1	8181007	1
158	KEY 3/16 x 2 1/8	9201087	2	9201087	2
160	WASHER 3/4 THIN	850238	2	850238	2
162	WHEEL AND TIRE 13"	830177	2	830177	2
176	NUT JAM 1/4-20	8143001	1	8143001	1
186	RING SNAP 5/8 T.A.	850233	1	850233	1
188	WASHER 3/4"	850230	1	850230	1

PARTS DRAWING FM





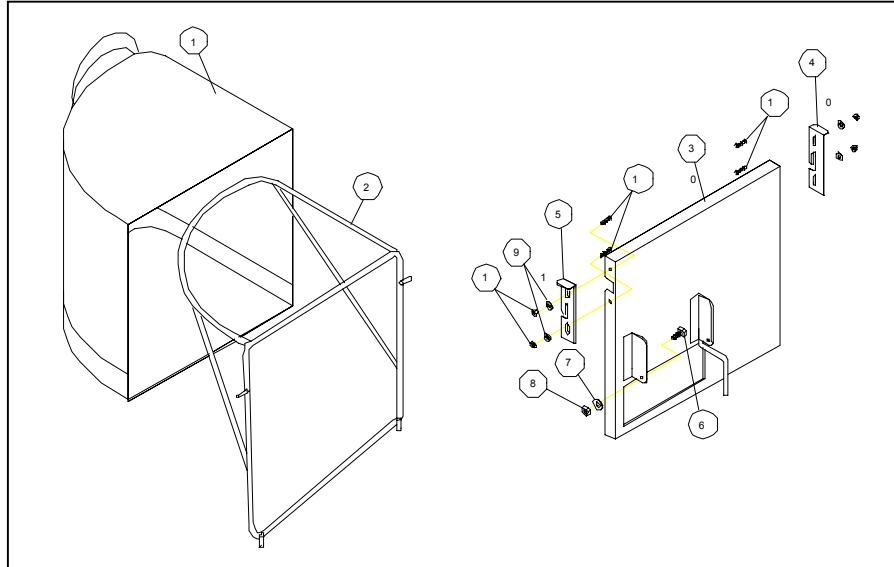
PARTS LIST

ITEM NO.	DESCRIPTION	FM3301E Part NO.	QTY	FM3301 Part NO.	QTY
3	PALNUTS 3/8"	360218	2	360218	2
8	KNOB 1/2" THREAD	430128	1	430128	1
10	LABEL CLUTCH DRIVE	500176	1	500176	1
11	LABEL BLADE DRIVE	500177	1	500177	1
12	GRIP HANDLE 1" x 7"	500267	1	500267	1
14	SWITCH ELECTRIC W/ NUT	500307	1		
28	SPRING COMPRESSOR 1/2"	520017	1	520017	1
30	CONTROL THROTTLE POS	520019	1	520019	1
31	ROD SHIFT LINKGAGE	520179	1	520179	1
32	BAR HANDLE BRACE FM	520024	2	520024	2
34	HANDLE RH FM	520026-S	1	520026-S	1
47	LABEL CONSOLE	520048	1	520048	1
52	LABEL READ MANUAL	890301	1	890301	1
60	SHIFT LOCK HANDLE FM WA	520075	1	520075	1
66	CABLE CLUTCH BLADE FM	520083	1	520083	1
67	CABLE CLUTCH DRIVE FM	520084-S	1	520084-S	1
68	CABLE CLUTCH BRAKE FM	520085	1	520085	1
69	BUSHING NYLON	500130	1	500130	1
82	HANDLE LH FM	520091-S	1	520091-S	1
74	LEVER CONTROL BRAKE FM	520093-S	1	520093-S	1
75	LEVER CONTROL DRIVE FM	520094	1	520094	1
76	LEVER CONTROL BLADE FM	520095	1	520095	1
77	PLATE REV LOCK OUT	520096	2	520096	2
78	BRACKET SHIFT PIVOT FM	520097	1	520097	1
79	GRIP LEVER ORANGE	520098	1	520098	1
80	CONSOLE FM W/ LABELS	520146	1	520146	1
82	CUP HOLDER	520102	1	520102	1
95	LABEL PUSH TO RELEASE	520117	1	520117	1
97	CLEVIS PINS 3/8 - 1.625	520119	1	520119	1
98	CLEVIS PINS 3/8 - 2.125	520120	1	520120	1
99	GRIP LEVER 0.125-1.00-3.75	520121	1	520121	1
100	GRIP LEVER 0.125-0.75X3.75	520121	1	520121	1
113	PLUG TUBE INSERT 1"	520122	2	520122	2
114	LABEL EAR-EYE-BREATHE	890132	1	890132	1
116	SCREW 1/4" - 20 X 5/8	890254	2	890254	2
117	PIN CLEVIS 5/16-24	890359	1	890359	1
121	TY-WRAP	830513	4	830513	4
122	PAL NUTS 5/16"	900407	1	900407	1
123	BOLT CARRIAGE 5/16-18 X 3/4	360203	6	360203	6
134	SCREW CAP 5/16-18 X 2	8024039	1	8024039	1
135	SCREWCAP 5/16-18 x 2 1/4	8041032	4	8041032	4
143	NUT LOCK 5/16-18 NYLON	8041033	9	8041033	9
144	NUT LOCK 3/8-16 NYLON	8160003	2	8160003	2
150	WASHER 1/4" FC	8171002	12	8171002	12
153	WASHER 5/16 SAE	8172008	2	8172008	2
154	WASHER 1/2" SAE ZP	8172011	2	8172011	2
177	LABEL BGI OVAL FM	520110	1	520110	1
185	RETAINING RING EXTERNAL	520176	1	520176	1
191	WASHER 5/16" FC	8171003	4	8171003	4

ACCESSORIES

GRASS CATCHER KIT P/N 520142

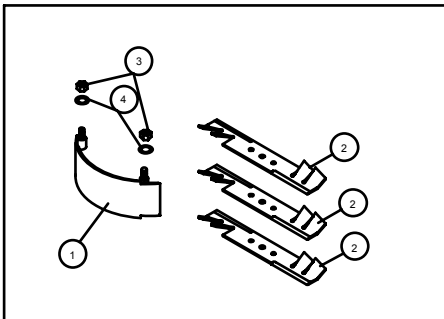
Purpose: Easily convert your mower to bag grass and leaves.



ITEM NO.	DESCRIPTION	Part NO.	QTY
1	GRASS CATCHER BAG	520012	1
2	WIRE FRAME GRASS CATCHER FM	520038	1
3	GRASS CATCHER MOUNT WA FM	520069	1
4	BRACKET GRASS CATHCER LATCH L FM	520059	1
5	BRACKET GRASS CATHCER LATCH R FM	520060	1
6	SCREW CAP 1/4" - 20 X 1" ZP	8041006	1
7	WASHER 1/4" FC ZP	8171002	1
8	NUTLOCK 1/4" - 20	8160001	1
9	WASHER #8 SAE	520126	4
10	SCREW ROUND HEAD #8-32 X 3/4" CLEAR ZINC	520128	4
11	NUTLOCK #8 - 32	520129	4
12	LIT GRASS CATCHER KIT FM	520147	1

MULCHING KIT P/N 520144

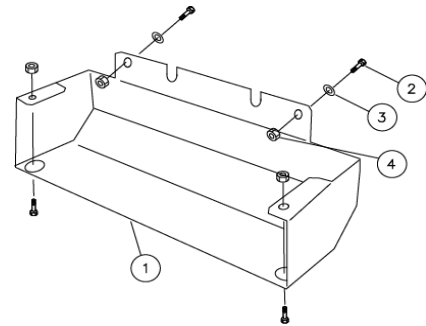
Purpose: Reduces lawn clippings to fine nutrient-rich particles that filter down to the soil.



ITEM NO.	DESCRIPTION	Part NO.	QTY
1	MULCHING PLATE WA FM	520014	1
2	BLADE 11.88" MULCHING	520002	3
3	NUTLOCK 3/8"-16 THIN HGT	8161042	2
4	WASHER 5/16 FC	8171003	2
5	LIT MULCHING KIT FM	520148	1

TRANSAXLE GUARD KIT P/N 520155

Purpose: To protect the transaxle from accidental contact from concrete curbs or other hazards.



ITEM NO.	DESCRIPTION	Part NO.	QTY
1	BRACKET GUARD TRANSAXLE FM	520151	1
2	SCREW/CAP 5/16-18X1"	8041028	4
3	WASHER 1/4 FC	8171002	2
4	NUTLOCK 5/16 - 18	8160002	4