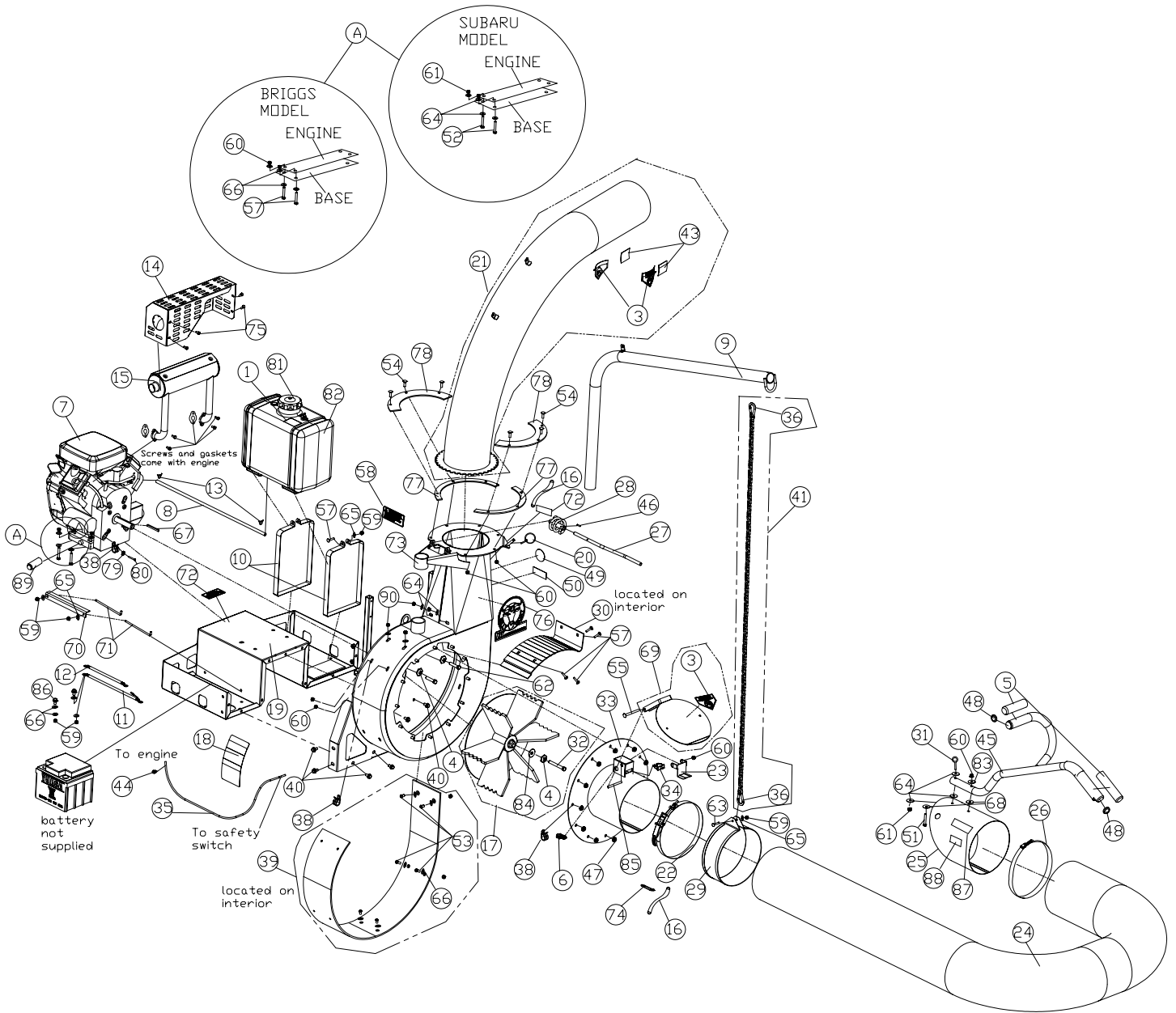


**PARTS DRAWING DL**





## DL Owner's Manual

### PARTS LIST

ITEM NO.	DESCRIPTION	DL25 PART NO.	QTY	DL18 PART NO.	QTY	ITEM NO.	DESCRIPTION	DL25 PART NO.	QTY	DL18 PART NO.	QTY
1	LABEL WARNING EXPLOSIVE FUEL	468572	1	468572	1	51	SCREWCAP 5/16-18 x 2	8041032	1	8041032	5
2						52	SCREWCAP 3/8-16 X 2	8041054	4	-	-
3	LABEL OPEI WARNING	400424	3	400424	3	53	BUTTON HEAD 5/16-18 X 3/4	791078	10	791078	10
4	WASHER TWISTED LOCK 7/16"	850132	3	850132	3	54	CARRIAGE BOLT 5/16x18x1	8024040	6	8024040	6
5	GRIP 1 1/4 ID X 9.5 LONG	440146	2	440146	2	55	BOLT CARR. 5/16 - 18 x 3 1/2	*8024050	1	*8024050	1
6	STRAIN RELIEF HEYCO 1244	500252	1	500252	1	56	CARRIAGE BOLT 3/8x16x1	8024058	4	8024058	4
7	ENGINE 25 HP SUBARU	791119	1	-	-	57	CARRIAGE BOLT 1/4-20 X 1 3/4	8024025	2	8024025	2
	ENGINE 18 HP VANGUARD	-	-	791118	1	58	LABEL WARNING ENGINE OVERHEAT	811215	1	811215	1
8	LINE FUEL DL	-	-	791060	1	59	NUT LOCK 1/4"-20 HEX Z/P	*8160001	8	*8160001	8
9	TUBE BOOM ARM DL	791113	1	791113	1	60	NUT LOCK 5/16-18	*8160002	8	*8160002	12
10	CLAMP GAS TANK	791043	2	791043	2	61	NUT LOCK 3/8	*8160003	5	*8160003	1
11	CABLE BATTERY RED 26"	500304	1	500304	1	62	SCREWCAP 7/16-14 X 2 GR 5 W/ PATCHLOC	790307	2	790307	2
12	CABLE BATTERY BLACK 10"	790133	1	790133	1	63	SCREWCAP 1/4-20 X 3" ZP	8041014	1	8041014	1
13	CLAMP FUEL LINE	-	-	790134	2	64	WASHER FLAT 3/8	*8171004	15	*8171004	7
14	EXHAUST GUARD	791045	1	791045	1	65	WASHER 1/4 SAE	*8172007	11	*8172007	19
15	EXHAUST SUBARU	791042	1	-	-	66	WASHER 5/16 SAE ZP	8172008	16	8172008	16
	EXHAUST VANGUARD	-	-	791041	1	67	KEY 1/4" SQ X 2 3/4"	9201125	1	9201125	1
16	LANYARD 10" PLASTIC	360243	2	360243	2	68	WASHER 5/16 FENDER	*8172020	2	*8172020	2
17	IMPELLER DL	791120-S	1	791120-S	1	69	DOOR FLAPPER INTAKE DL 12"	791103-S	1	-	-
18	LABEL DL INSTRUCT/WARN	790142	1	790142	1		DOOR FLAPPER INTAKE DL 10"	-	-	791102-S	1
19	BASE ENGINE ASSY DL	791100	1	791100	1	70	BRACKET BATTERY DL	790230	1	790230	1
20	LYNCH PIN	520004	1	520004	1	71	ROD BATTERY HOLD DOWN	790231	2	790231	2
21	ELBOW ASSY DL	791114-S	1	791114-S	1	72	LABEL WARNING SECURE	790232	1	790232	1
22	CLAMP QUICK RELEASE 12"	791065	1	-	-	73	HOUSING ASSY DL	791101-S	1	791101-S	1
	CLAMP QUICK RELEASE 10"	-	-	791064	1	74	SAFETY PIN	800365	1	800365	1
23	LEVER HOSE SWITCH	791068	1	791068	1	75	SCREW 1/4-20 X 5/8 HWH	890359	4	850359	4
24	HOSE 12" x 10" INTAKE	791034	1	-	-	76	LABEL DL	791099	1	791099	1
	HOSE 10" X 10" INTAKE	-	-	791033	1	77	PLATE CLAMP SPLIT	791049	2	791049	2
25	NOZZLE INTAKE 12" FORMED	790149	1	-	-	78	PLATE CLAMP HALF	791047	2	791047	2
	NOZZLE INTAKE 10" FORMED	-	-	811005	1	79	WASHER LOCK 5/16	8181008	1	8181008	1
26	CLAMP HOSE 12"	790150-01	1	-	-	80	SCREWCAP 5/16-24 X 3/4	8042026	1	8042026	1
	CLAMP HOSE 10"	-	-	810706-01	1	81	CAP TANK FUEL 6 GAL	791074	1	791074	1
27	SHAFT GEAR WORM	791038	1	791038	1	82	TANK FUEL 6 GAL	791035	1	791035	1
28	GEAR WORM	791109	1	791109	1	83	WASHER 5/16 SAE	8172008	1	8172008	1
29	BAND HOSE BOOM 12" FORMED	790153	1	-	-	84	WASHER 1.5 OD X .453 ID X .5	440176	1	440176	1
	BAND HOSE BOOM 10" FORMED	-	-	810868	1	85	SPACER 3/8 X 2 1/2	900503	1	900503	1
30	CUT OFF LOADER	791020-S	1	791020-S	1	86	SCREWCAP 1/4-20 x 3/4	8041004	2	8041004	2
31	EYE BOLT	791081	1	791081	1	87	LABEL NOZZLE SECURE	811215	1	811215	1
32	SCREWCAP 7/16-20X3 1/2" GR.8 WITH PATCH (TORQUE 60 ft.Lib. (81.4Nm)	440150	1	440150	1	88	LABEL WARNING NOZZLE	790301	1	790301	1
33	INTAKE HOUSING DL 12"	791105	1	-	-	89	VALVE OIL DRAIN	520182	1	520182	1
	INTAKE HOUSING DL 10"	-	-	791104	1	90	NUT LOCK 5/16-18 ZP	850164	4	850164	4
34	PLUNGE SWITCH	791095	1	791095	1						
35	HARNESS WIRE DL	791096	1	791096	1						
36	HOOK SNAP SAFETY	791027	2	791027	2						
37											
38	CLAMP FUEL HOSE LINE	791070	3	791070	3						
39	INTERIOR LINER	791018-S	1	791018-S	1						
40	WASHER FACE BOLT	791080	8	791080	8						
41	CHAIN HANG HOSE DL	791117	1	791117	1						
42											
43	LABEL FLYING DEBRIS	810736	2	810736	2						
44	WIRE TAP IN	840215	1	840215	1						
45	HANDLE NOZZLE	791116	1	791116	1						
46	ROLL PIN .1875 X 0.875	8195162	1	8195162	1						
47	NUT WASHER FACE	791079	12	791079	12						
48	PLUG TUBE INSERT 1.25 OD	791056	2	791056	2						
49	LABEL EAR EYE BREATHE	890254	1	890254	1						
50	LABEL READ	890301	1	890301	1						